



South Coast Wine Centre*

8th Annual Berry Food and Wine Show – Transport Information



Saturday 6th February 2010

1. Wollongong/Albion Park Timetable
2. Kiama Timetable
3. Gerringong Timetable
4. Nowra Timetable

Phone 0407 452 430 now to reserve your seats!

1. Wollongong and Albion Park Timetable

Bus departs:

- 11.30am Five Islands Brewery Wollongong, Lower Crown Street (Returning at 5pm)
 - 12.00pm Albion Park McDonalds, Princes Highway (Returning at 4.30pm)
-



2. Kiama Timetable

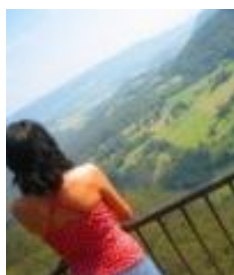
Bus departs:

- 11.30am Sebel Harbourside Hotel (Returning at 4.00pm)
 - 11.35am Kiama Information Centre (Returning at 3.55pm)
-

3. Gerringong Timetable

Bus departs:

- 11.50am Bellachara Hotel (Returning at 3.45pm)
 - 11.55am Anchor Inn Hotel (Returning at 3.40pm)
-



4. Nowra Timetable

Bus departs:

- 12.30pm Nowra Information Centre (Returning at 4.30pm)
-

Prices

- Kiama/Gerringong/Nowra - Transport and Berry Food and Wine Show Entrance \$25.00
- Wollongong/Albion Park - Transport and Berry Food and Wine Show Entrance \$30.00

Phone 0407 452 430 to make a booking.

South Coast Wine Centre - Operated by Kenny Escapes

www.kennyescapes.com